

Newsletter, May 2026

Quartz, Cosmo, and SPRINT are coming together to form a new, unified platform. Read on to find out a little bit more about what's involved, when it'll be arriving, and what you can do to get involved in its development.

Why the change?

Amey's existing rail performance platforms - Quartz, Cosmo, and Sprint - have been running in the UK for many years now, giving train operators, asset managers, and others valuable daily insights into rail performance.

However, these systems are reaching the end of their life and will therefore soon be replaced by a new, unified, and future-ready platform. This platform will bring together the powerful analytics of Quartz, Cosmo, and Sprint in a single system designed to simplify workflows, improve efficiency, and unlock new ways to analyse rail performance data.

Its modern, integrated interface will allow users to examine different types of performance data in one place, filter and export data more easily, and uncover trends and patterns in greater detail than before.

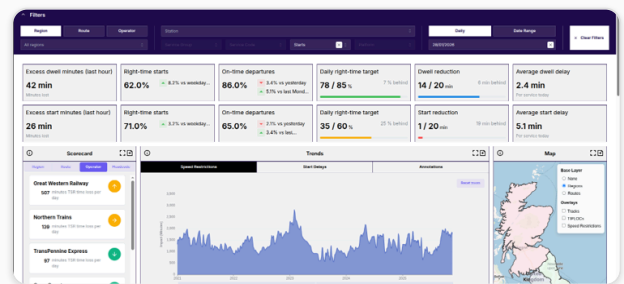
Quartz	Cosmo	Sprint
<p>Understand platform dwell time and performance.</p> <ul style="list-style-type: none"> • Train delays down to the second. • Data by platform, headcode and arrival, dwell and depart times. • Investigate worst performing trains. • Journey graphs for individual trains. • Delay annotation. 	<p>Analyse delay causes and their impact.</p> <ul style="list-style-type: none"> • Displays performance data over multiple different time periods. • Users interact directly with the data through its inset map. • Draws information from both the TRUST and TD datasets. • Data export for onward analysis. 	<p>Examine temporary and emergency speed restrictions.</p> <ul style="list-style-type: none"> • See the time impact a speed restriction has on the network. • Geographical analysis of speed restrictions. • Data export for onward analysis.

Delivery timeline

Work on the new platform is already well underway, with primary development expected to be wrapped up by the end of the summer. We'll then be running user acceptance testing and training sessions before launching the system in November 26.

During product roll-out, existing users of Quartz, Cosmo, and Sprint will be moved over to the new system. We'll provide elevated levels of support to help you get going with the new system with minimal disruption to your day-to-day work.

Then, once everyone is up and running, we'll move to business as usual (BAU) operations and continue to provide support and improvements based on your feedback.



Get Involved

We'll soon be launching a website where you'll be able to find out more about the new platform and its roll-out plan, register interest in UAT and send us your questions.

In the meantime, we'd greatly appreciate it if you could take a moment to scan the QR code or follow the link to the right and complete our existing user survey. Doing so will help us understand a bit more about where you work in the rail sector and help us cater for your needs.



Please scan the code or
[click here](#)